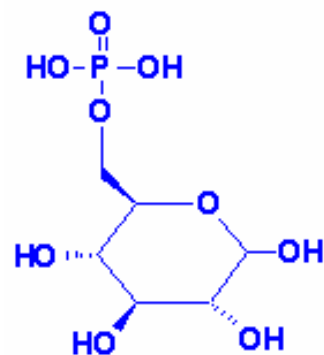


## SUBSTRATES

GLUCOSE-6-PHOSPHATE DISODIUM SALT  
GPS-15C

## SPECIFICATIONS

CAS	56-73-5
Appearance:	White lyophilizate
Molecular weight:	304.2
Molecular formula:	C <sub>6</sub> H <sub>11</sub> O <sub>9</sub> PNa <sub>2</sub>
Solubility (C=50mg/mL):	Clear solution in water
G-6-P (enzym.):	> 77%
G-6-P (from Porg.):	> 77%
Na (flame photom.):	12.5 ± 1%
H <sub>2</sub> O (K.Fischer):	8 ± 2%
Porg:(Ptotal - Pinorganic - Pfructose-6-P)	> 8.9%
Pi:	< 0.6%
Fructose-6-P (enzym.):	< 2%
Glucose (enzym.):	< 0.2%
Storage:	Room temperature
Stability:	At least 2 years at R.T.



Glucose -6-Phosphate

## CONTACTS

See us on the web at:

<http://www.sorachim.com>

Or send us an e-mail at:

[contact@sorachim.com](mailto:contact@sorachim.com)

## APPLICATIONS

This substrate is used in the determination of G6P-DH, glucose, α-Amylase, CK, PHI and ATP